

## ***UroLift Now Available at Valley Medical Center***



**Daniel Simon, MD**

**Susan Dong, MD, Rahul Desai, MD**

**Xinyue Wang, PA-C, Paul Niemi ARNP**

**Urology Clinic**

**Medical Arts Center, Suite 500**

# ***BPH Treatment Options***

## **Behavioral Modifications:**

- Nighttime fluid restriction
- Double voiding

## **Supplements:**

- Saw Palmetto

## **Medications:**

- Alpha blockers
- 5-alpha reductase inhibitors
- Combination drug therapy +/- OAB tx
- Tadalafil (Cialis)

## **Minimally Invasive Surgical Options**

- UroLift
- Water Vapor Thermal Therapy (Rezum)
- Prostatic Stents
- Microwave Thermotherapy

## **More Invasive Surgical Options**

- Vaporization of the Prostate
- TURP
- Laser Enucleation of Prostate
- Aquablation
- Simple Prostatectomy

# Benefits and side effects of BPH medications

## Alpha Blockers<sup>6,7</sup>

4-15%	5-15%	5-12%	6-11%	3-5%	1-10%	1-3%
-------	-------	-------	-------	------	-------	------

Asthenia

Dizziness

Headache

Nasal Congestion

ED

EjD  
Reduced Libido



5.6-7.5
---------

IPSS Improvement

Other side effects include syncope, hypotension, eye surgery complications<sup>6,7</sup>

## 5ARI<sup>6,8,9</sup>

1-2%	1-5%	1-4%	9%	7-8%	1-4%	3-5%
------	------	------	----	------	------	------

Asthenia

Dizziness

Headache

Respiratory

ED

EjD  
Reduced Libido

3.5-4.5	0.9-2.4
---------	---------

IPSS Improvement QOL

Other side effects include syncope and hypotension.  
Sexual side effects can linger after medication is stopped.

ED – Erectile Dysfunction

EjD – Ejaculatory Dysfunction

QOL – Quality of Life

# Treatment Related Sexual Dysfunction

Sexual Dysfunction Rate		
	Erectile Dysfunction	Ejaculatory Dysfunction
<b>UroLift® System*1-5</b>	0%	0%
<b>Drugs</b>		
Alpha Blockers <sup>6</sup>	3%-5%	1%-10%
5ARI <sup>6</sup>	8%	4%
<b>Surgery</b>		
TURP <sup>6</sup>	10%	65%
PVP Laser <sup>6</sup>	7%	42%
<b>Thermal Therapies</b>		
TUMT <sup>6</sup>	<3%	5-16%
TUNA <sup>6</sup>	3%	4%
Rezum <sup>7</sup>	0%	3%

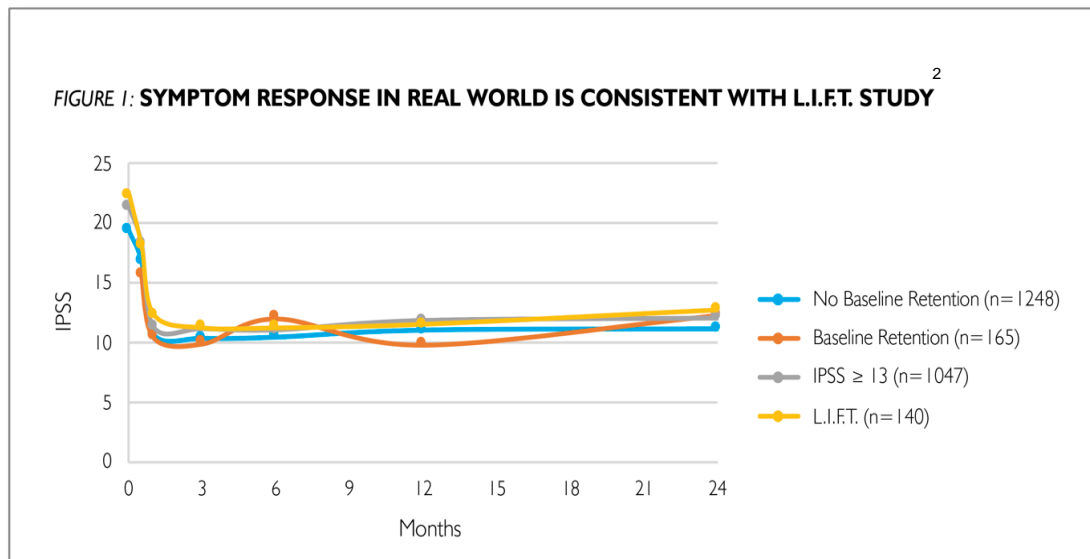
\* No instances of new, sustained erectile or ejaculatory dysfunction in the FDA pivotal study

1. Roehrborn, et al., J Urol 2013; 2. McVary, et al., J Sex Med 2014; 3. Sonksen, Et al., Eur Urol 2015; 4. Woo, et al., J Sex Med 2012; 5. McNicholas, et al., Eur Urol 2013; 6. AUA Guidelines 2003; 7. McVary, J Sex Med 2016 June

MAC01255-01 Rev C-p15

## Clinical Data

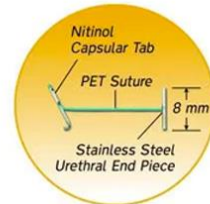
- On average, 10-point reduction in symptom scores
- Five-year durability
- Consistent results across studies and in clinical practice



## ***UroLift System Advantages***

- Quick, outpatient procedure
- Typically, no catheter required after treatment
- Rapid symptom relief and recovery
- Preservation of sexual function
- Does not disqualify patients from any future prostate surgical options

# How the UroLift System Works



## Enlarged Prostate

An enlarged prostate can narrow or even block the urethra.



## Step 1

The UroLift Delivery Device is placed through the obstructed urethra to access the enlarged prostate.



## Step 2

Small UroLift Implants are permanently placed to lift and hold the enlarged prostate tissue out of the way and increase the opening of the urethra.

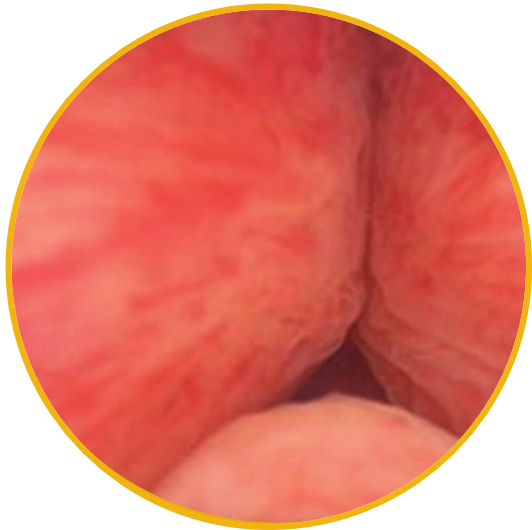


## Step 3

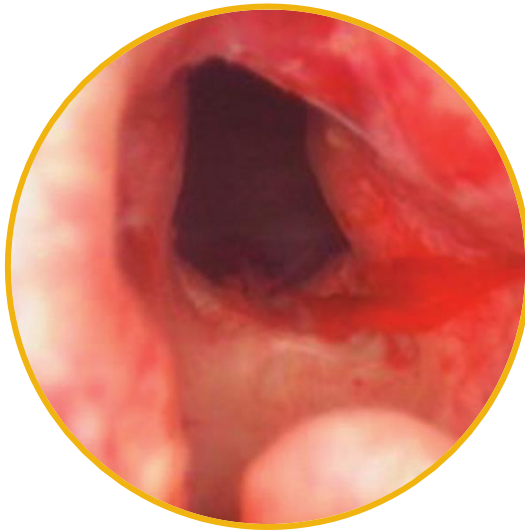
The UroLift Delivery Device is removed, leaving an open urethra designed to provide symptom relief.

## ***UroLift System Treatment Images***

**Before Treatment:**  
Obstructed Channel



**After Treatment:**  
Open Channel





## ***Post Treatment Expectations***

- Symptom improvement within 2 weeks
- Continued improvement up to 3 months
- Durability proven out to 5 years
- Common side effects
  - Discomfort when urinating
  - Urgency
  - Pelvic pain
  - Blood in the urine
  - Serious side effects are rare
- Most symptoms were mild to moderate in severity and resolved within two to four weeks after the procedure<sup>1</sup>



# ***Candidates for UroLift***

## **Patient Selection:**

### **Men With BPH Who...**

- ✓ Want increased symptom relief
- ✓ Want off BPH medications
- ✓ Would prefer a less invasive solution
- ✓ Want to preserve sexual function
- ✓ Are concerned about surgery

### **Exclusion criteria...**

- ✗ Men with very large glands > 80 gms
- ✗ Men with enlarged, intravesical median lobes
- ✗ Patients unable to discontinue anticoagulation