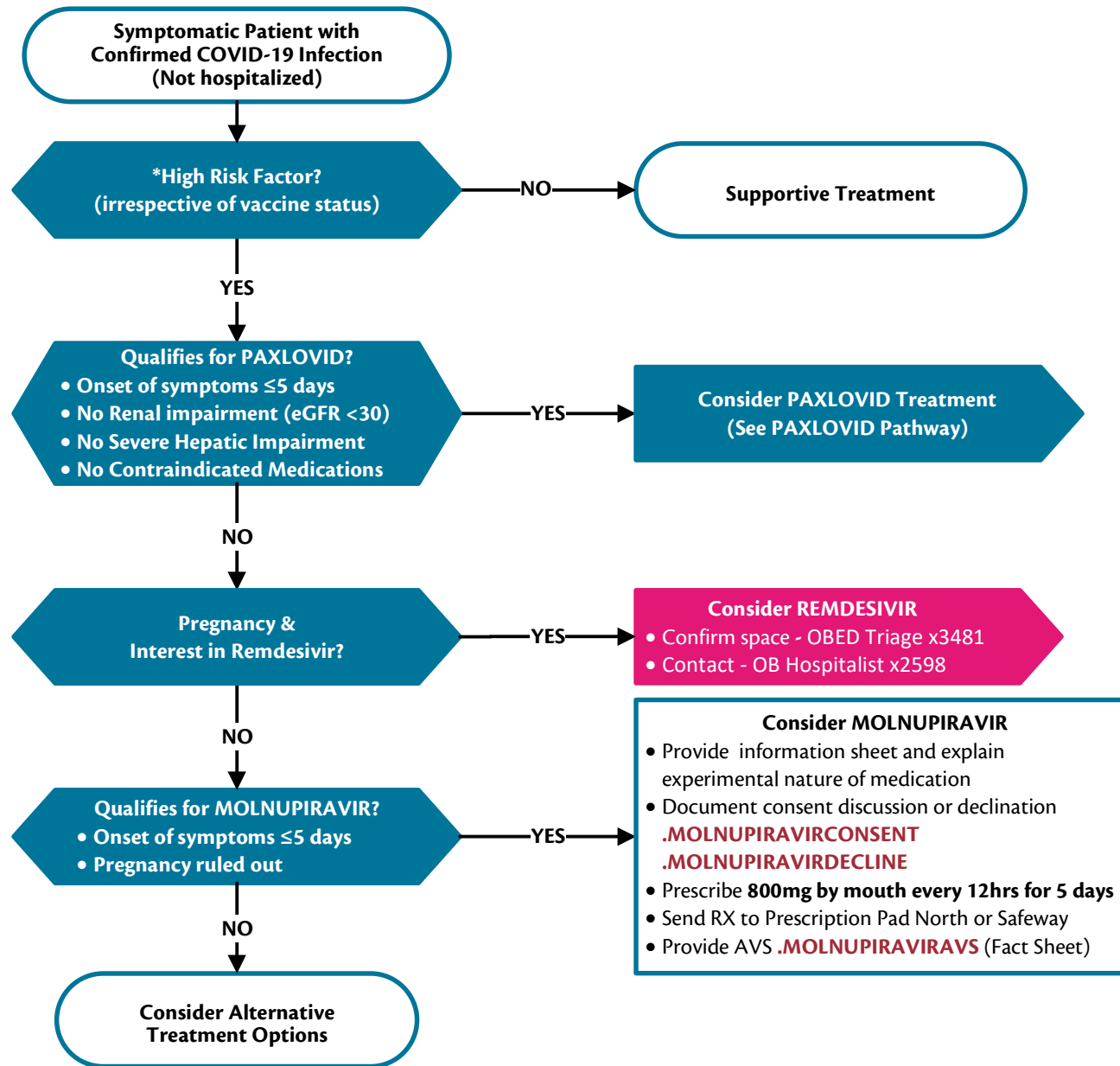


UW Medicine | VALLEY MEDICAL CENTER

COVID-19 Therapeutics



Inclusion Criteria

- Age ≥18 weighing at least 40kg **AND**
- Onset of symptoms ≤7 days

Exclusion Criteria

- Patient requires oxygen therapy or increased oxygen flow rate due to COVID-19 **OR**
- Patient has severe symptoms requiring hospitalization due to COVID-19 (OK to treat patients with mild COVID-19 admitted for separate primary reason)

*COVID-19 High Risk Factors

- Pregnancy
- Older Age (>50)
- Obesity (BMI>35)
- Diabetes
- Cardiovascular disease or hypertension
- Chronic lung disease
- Sickle cell disease
- Neurodevelopmental disorders
- Medical complexity
- Medically-related technological dependence
- Reduced Ability to Form Immunity
 - Active cancer/chemotherapy
 - Bone marrow/solid organ transplant (<1yr)
 - HIV with CD4 <200
 - Prednisone ≥20mg for 14+days
 - Dialysis for End-stage Renal Failure
 - Severe underlying immune deficiency
 - Chronic biologic immune suppression

OB Patients: Please forward provider note prior to closing to OB provider for all empaneled patients