

CARING FOR OUR COMMUNITY LIKE FAMILY

# Primary Care Quality Update

Long Nguyen, DO

# Agenda



Quality Metrics

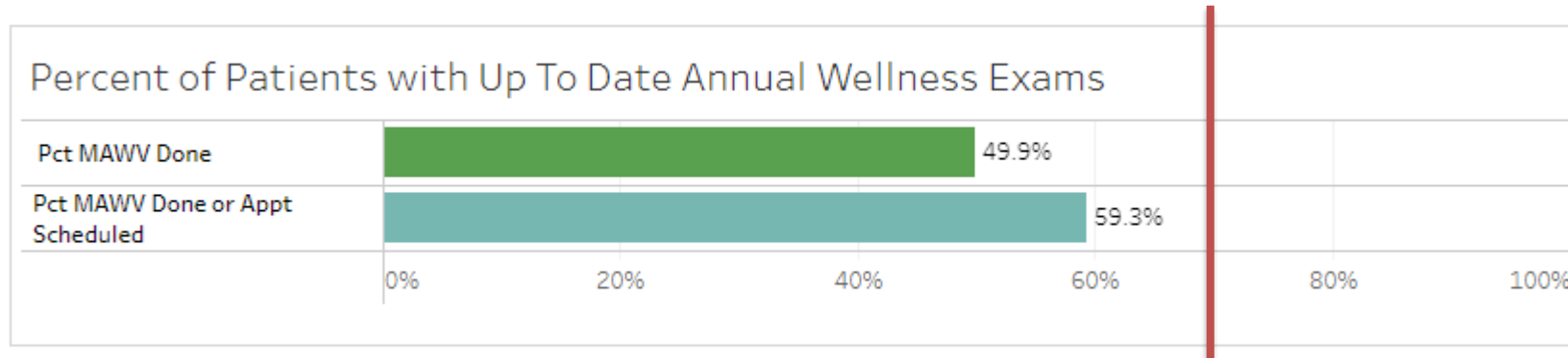


Care Pathways



Awards!

# Medicare Annual Wellness Visits (AWV)



**Goal: 70% by end of 2023**

# Patients Are First- Panel Based Measures

## Disease Management (5 measures)

- Diabetes A1c control
- Diabetes BP control
- Diabetes Retinal Exam
- Diabetes Kidney Health
- HTN BP control
- Depression-PHQ9 utilization

## Preventive Management (6 measures)

- Breast Cancer Screening
- Cervical Cancer Screening
- Colorectal Cancer Screening
- Chlamydia Screening
- Childhood Immunization Status

# Diabetes Care- A1c of less than 9.0

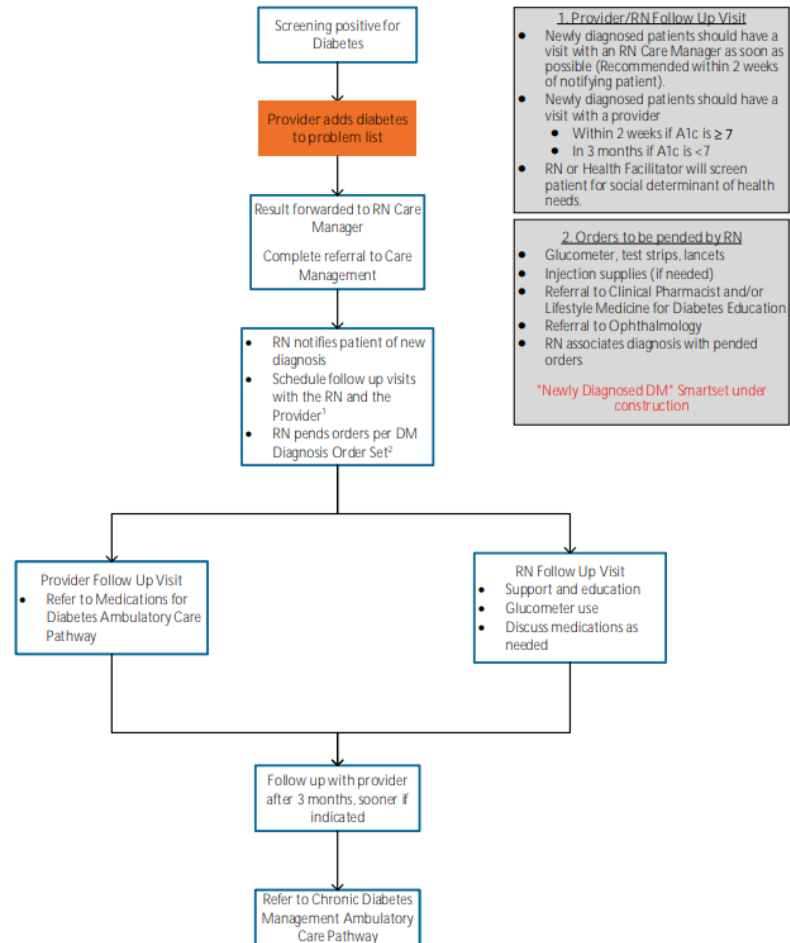
+11,800 patients with diabetes in our clinic network

September 2023: 75.7%  
(Goal 74.7%)

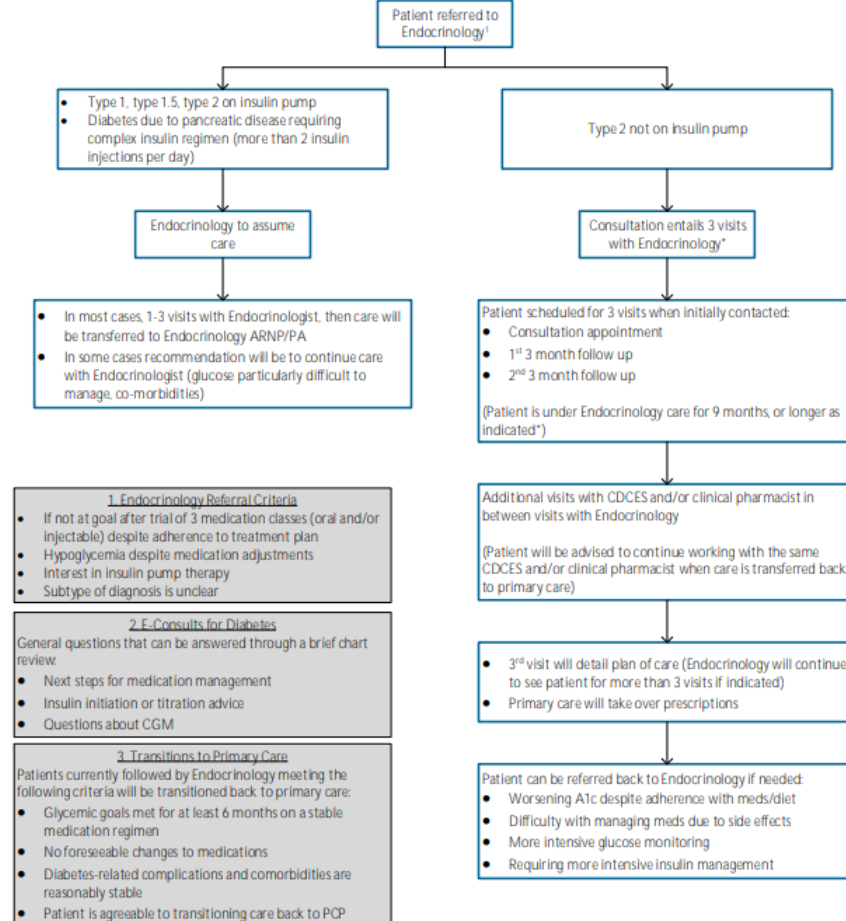


# Diabetes Care Pathways

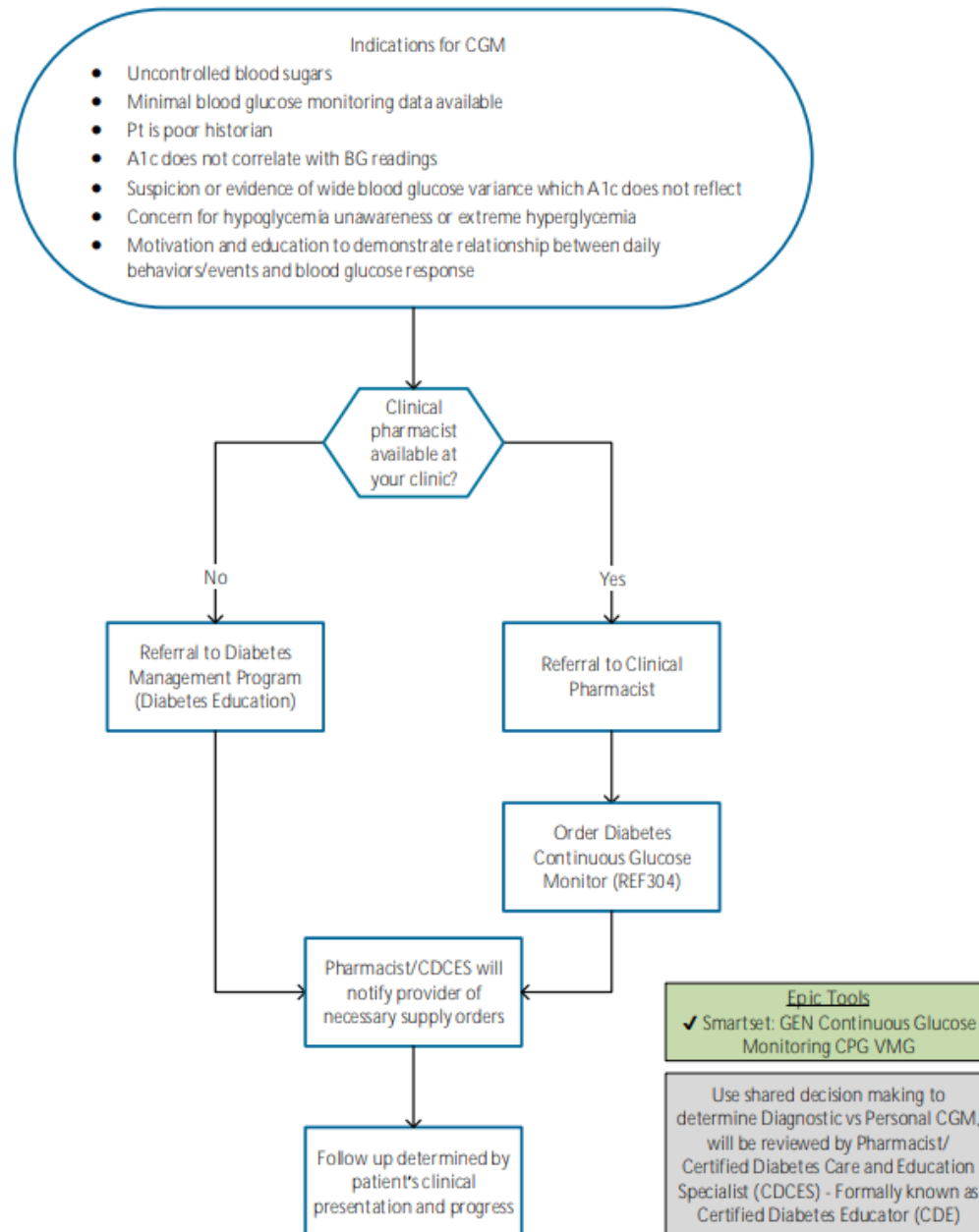
## UW Medicine | VALLEY MEDICAL CENTER Ambulatory Care Pathway: Newly Diagnosed Diabetes



## UW Medicine | VALLEY MEDICAL CENTER Ambulatory Care Pathway: Transitions to Endocrinology



## Ambulatory Care Pathway: Continuous Glucose Monitoring (CGM)



### Diabetes Continuous Glucose Monitoring

✓ Accept ✗ Cancel

Continuous glucose monitoring for ☐ HbA1c not at target ☐ Therapy change ☐ Recurrent hypoglycemia ☐ Pregnancy

☐ Other

Class:

Referral: Priority:

To dept:

To provider:

# of visits:

### Nutrition Services Referral

✓ Accept ✗ Cancel

Continuous Glucose Monitor Device (A short term, non-invasive tool used within the program to educate non-compliant patients about their BG levels)

Class:

Referral: Priority:

To dept:

To provider:

# of visits:

# Diabetes Smartset

## GEN Diabetes Mellitus Type 2 CPG VMG

- [Chronic Diabetes Management Care Pathway](#)

### ▼ Orders

- ▶ Labs [Click for more](#)
- ▶ Labs - Future 3 Months [Click for more](#)
- ▶ Labs - Future 6 Months [Click for more](#)
- ▶ MyChart [Click for more](#)
- ▶ Referrals [Click for more](#)

### ▼ Supplies

- ▶ Supplies [Click for more](#)
- ▶ CGM Supplies [Click for more](#)

### ▼ Medications

- ▶ Metformin [Click for more](#)
- ▶ GLP-1RA [Click for more](#)
- ▶ DPP-4i [Click for more](#)
- ▶ SGLT2i [Click for more](#)
- ▶ TZD [Click for more](#)
- ▶ SU [Click for more](#)
- ▶ Insulins - Basal Analog [Click for more](#)
- ▶ Insulins - Intermediate Acting [Click for more](#)
- ▶ Insulins - Prandial [Click for more](#)
- ▶ Insulins - Premixed [Click for more](#)
- ▶ Hypoglycemic Therapy [Click for more](#)
- ▶ Other Medications [Click for more](#)

### ▶ Immunizations

### ▼ Level of Service

- ▶ New Patient [Click for more](#)
- ▶ Established Patient [Click for more](#)

### ▼ Patient Instructions

- ▶ Patient Instructions [Click for more](#)

### ▼ Supplies


- ☐ Blood Glucose Test Kit Panel
- ☐ insulin syringe,safetyneedle 1 mL 31 gauge x 15/64" Syringe  
Normal, R-0, Please provide brand as covered by insurance, Diagnosis code E11.9
- ☐ insulin syringe-needle U-100 1 mL 31 gauge x 15/64" Syringe  
Normal, R-0, Please provide brand as covered by insurance, Diagnosis code E11.9
- ☐ pen needle, diabetic 32 gauge x 5/32" Needle  
Normal, R-0, Please provide brand as covered by insurance, Diagnosis code E11.9

### ▼ CGM Supplies

- ☒ Dexcom G6 CGM Panel
  - ☒ blood-glucose meter,continuous (DEXCOM G6 RECEIVER) Misc  
[Use to check glucose using Dexcom G6 sensors daily.](#)  
Normal, Disp-1 each, R-0
  - ☒ blood-glucose sensor (DEXCOM G6 SENSOR) Device  
[Use to check glucose daily. Change every 10 days.](#)  
Normal, Disp-9 each, R-3
  - ☒ blood-glucose transmitter (DEXCOM G6 TRANSMITTER) Device  
[Use to check glucose with Dexcom G6 sensor daily. Change every 90 days.](#)  
Normal, Disp-1 each, R-3
- ☒ FreeStyle Libre CGM Panel
  - ☒ flash glucose scanning reader (FREESTYLE LIBRE 2 READER)  
[Use as directed for continuous glucose monitoring](#)  
Normal, Disp-1 each, R-0
  - ☒ flash glucose sensor (FREESTYLE LIBRE 2 SENSOR)  
[Use as directed for continuous glucose monitoring](#)  
Normal, Disp-6 kit, R-3
  - ☒ blood sugar diagnostic (FREESTYLE PRECISION NEO STRIPS) Strip  
[1 strip by NOT APPLICABLE route daily as needed Use to check blood glucose using Freestyle libre 2 READER daily as needed.](#)  
Normal, Disp-100 strip, R-3

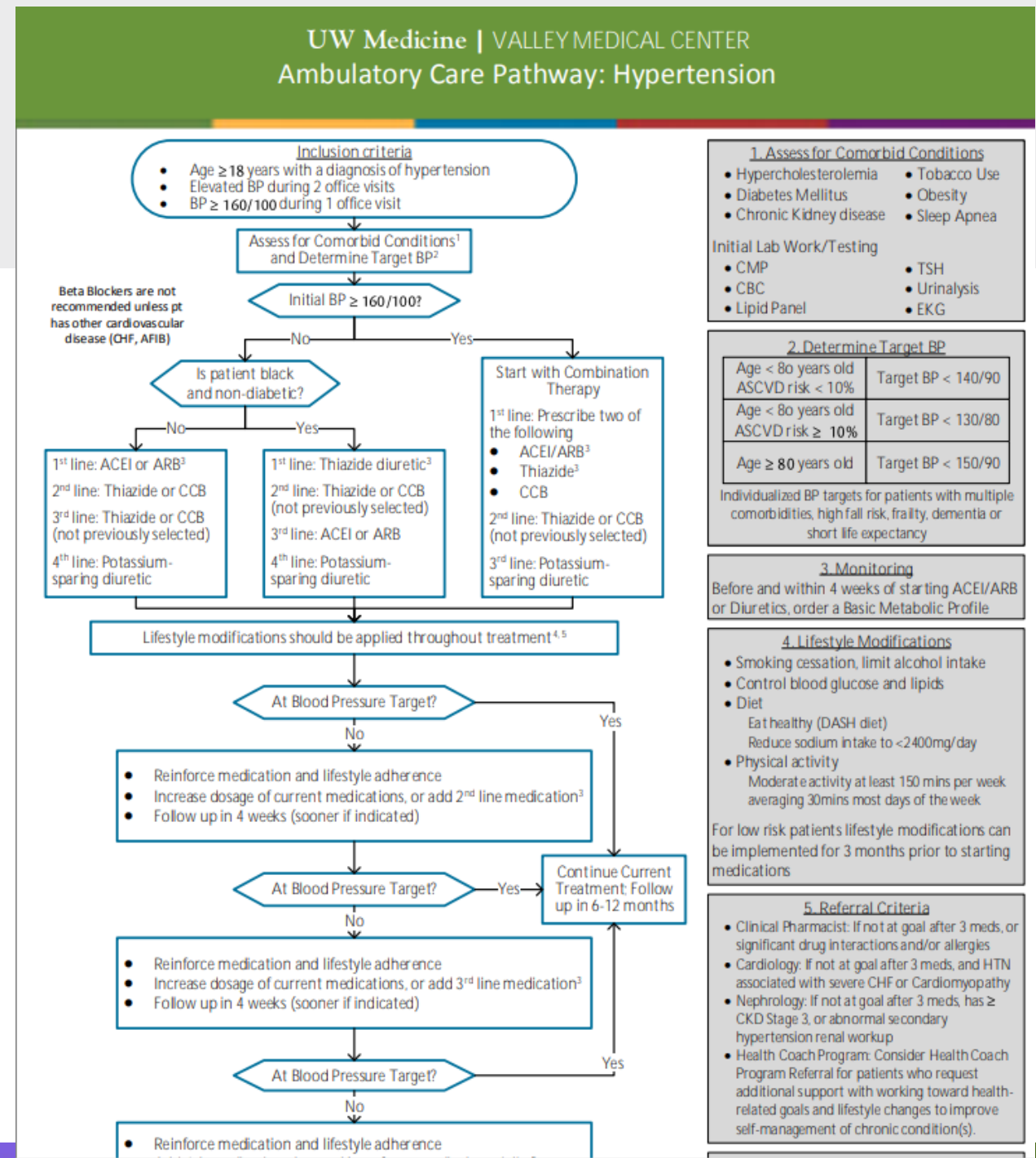


# Hypertension: Goal BP < 140/90

Hypertension Blood Pressure Control - Panel	Numerator	14,662	14,908	14,888	0	0	0	0	0	0	0	0	0	14,888	67.9%	✗	68.4%
	Denominator	21,847	21,983	21,940	0	0	0	0	0	0	0	0	0	21,940			
	Pct of Total	67.1%	67.8%	67.9%										67.9%			
																	
Diabetes Blood Pressure Control - Panel	Numerator	8,559	8,700	8,706	0	0	0	0	0	0	0	0	0	8,706	73.5%	✓	72.1%
	Denominator	11,672	11,802	11,844	0	0	0	0	0	0	0	0	0	11,844			
	Pct of Total	73.3%	73.7%	73.5%										73.5%			



# Hypertension

- Recheck BP if 1<sup>st</sup> BP is high
- Close follow up for patients with uncontrolled HTN or starting new medication (1-2 months)
- Refer to lifestyle medicine or specialist when necessary
- Consider health coach program



# Breast and Colon Cancer Screening

## Progress:

- Breast Cancer screening
  - July 70.6% → September 70.1% (Goal 77.4%) 
- Colon Cancer screening
  - July 70.0% → September 70.4% (Goal 72.6%) 

# American Heart Association Awards

UW Medicine | VALLEY MEDICAL CENTER



# Check. Change. Control. Cholesterol.

- Cardiology Clinic
- Cascade Primary Care Clinic
- Covington Primary Care
- Diabetes-Thyroid Clinic
- Fairwood Primary Care Clinic
- Kent Primary Care Clinic
- Kent Station Primary Care Clinic
- Lake Sawyer Primary Care Clinic
- Maple Valley Primary Care Clinic
- Newcastle Primary Care Clinic
- Renton Highlands Primary Care Clinic
- Senior Care & Internal Medicine Primary Care Clinic
- Valley Family Medicine
- Valley Medical Center



# Target: BP

## Gold+

- Covington Primary Care Clinic
- Fairwood Primary Care Clinic
- Kent Station Primary Care Clinic
- Lake Sawyer Primary Care Clinic



## Silver

- Cardiology Clinic
- Cascade Primary Care Clinic
- Diabetes/Thyroid Clinic
- Kent Primary Care Clinic
- Maple Valley Primary Care Clinic
- Newcastle Primary Care Clinic
- Renton Highlands Primary Care Clinic
- Renton Landing Primary Care Clinic
- Senior Care, Internal Medicine Primary Care Clinic
- Valley Family Medicine
- Valley Medical Center





# Target: Type 2 Diabetes

- Cascade Primary Care Clinic
- Covington Primary Care
- Diabetes-Thyroid Clinic
- Fairwood Primary Care Clinic
- Kent Primary Care Clinic
- Kent Station Primary Care Clinic
- Lake Sawyer Primary Care Clinic
- Maple Valley Primary Care Clinic
- Newcastle Primary Care Clinic
- Renton Highlands Primary Care Clinic
- Senior Care, Internal Medicine Primary Care Clinic
- Valley Family Medicine
- Valley Medical Center



# Patient-Centered Medical Home Recognition

## Congratulations to all 11 Primary Care Clinics!

- Cascade Primary Care Clinic
- Covington Primary Care
- Fairwood Primary Care Clinic
- Kent Primary Care Clinic
- Kent Station Primary Care Clinic
- Lake Sawyer Primary Care Clinic
- Maple Valley Primary Care Clinic
- Newcastle Primary Care Clinic
- Renton Highlands Primary Care Clinic
- Senior Care, Internal Medicine Primary Care Clinic
- Valley Family Medicine



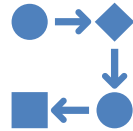


# FY2024 Ambulatory Quality Overview



## Quality Improvement:

Time Out  
Breast cancer screening  
Colon cancer screening  
Depression/suicide screening



## Care Pathways:

Stroke update  
Osteoporosis (new)  
Depression/Suicide update



## PCMH



## Strategic Incentive Planning

# THANK YOU!



UW Medicine | VALLEY MEDICAL CENTER

