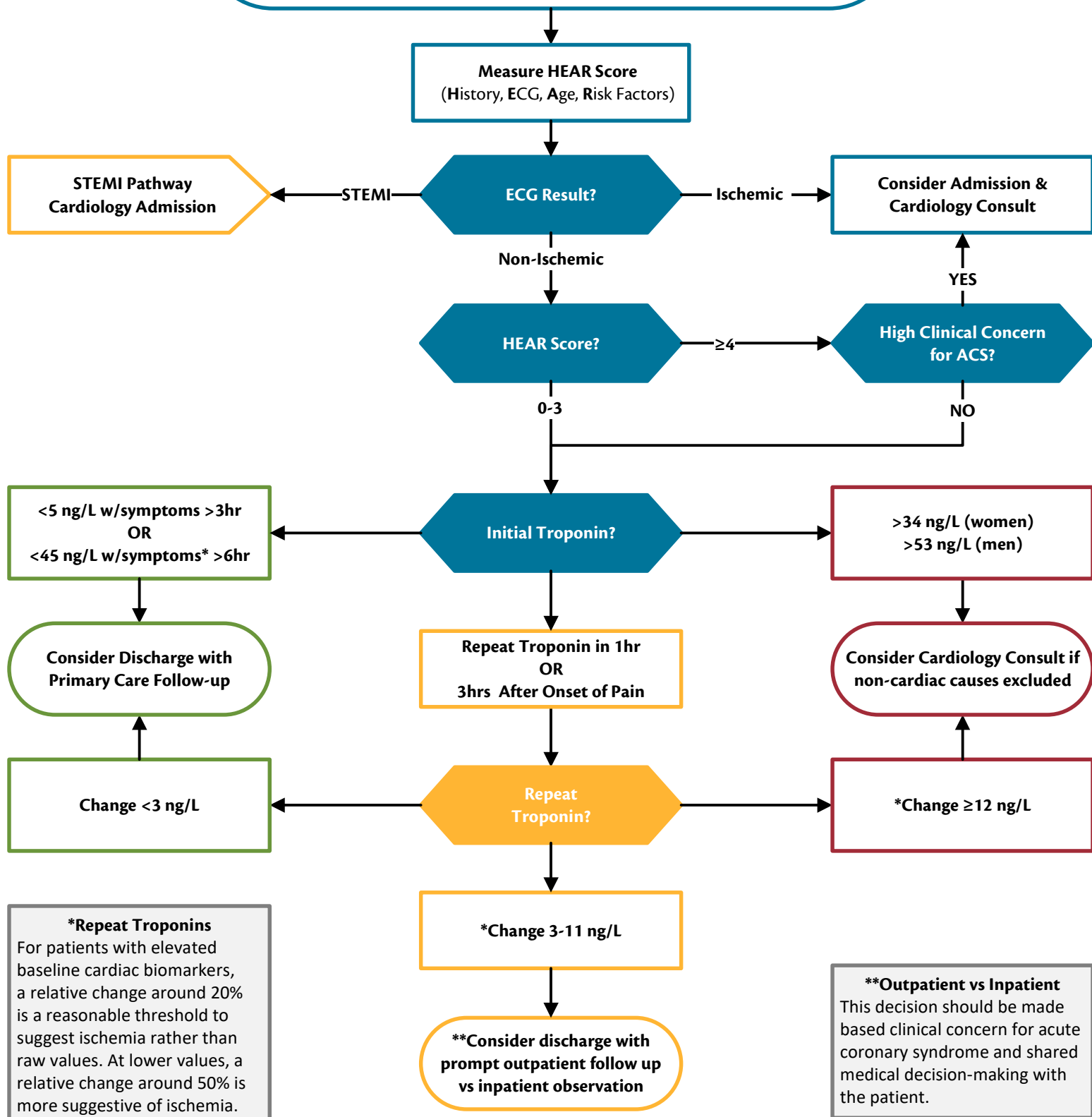


UW Medicine | VALLEY MEDICAL CENTER

Acute Chest Pain: Emergency Management

Acute Chest Pain
This algorithm primarily applies to patients presenting with acute chest pain or symptoms consistent with ACS. Elevated troponin is common in other non ACS disorders including but not limited to critically ill patients especially with sepsis, diabetes, or respiratory failure, COVID, CHF, cardiomyopathy, valvular disease, inflammatory conditions, kidney disease, anemia, or acute neurologic disorders. Clinical scenarios should determine need for cardiology consult.



***Repeat Troponins**
For patients with elevated baseline cardiac biomarkers, a relative change around 20% is a reasonable threshold to suggest ischemia rather than raw values. At lower values, a relative change around 50% is more suggestive of ischemia.

****Outpatient vs Inpatient**
This decision should be made based clinical concern for acute coronary syndrome and shared medical decision-making with the patient.