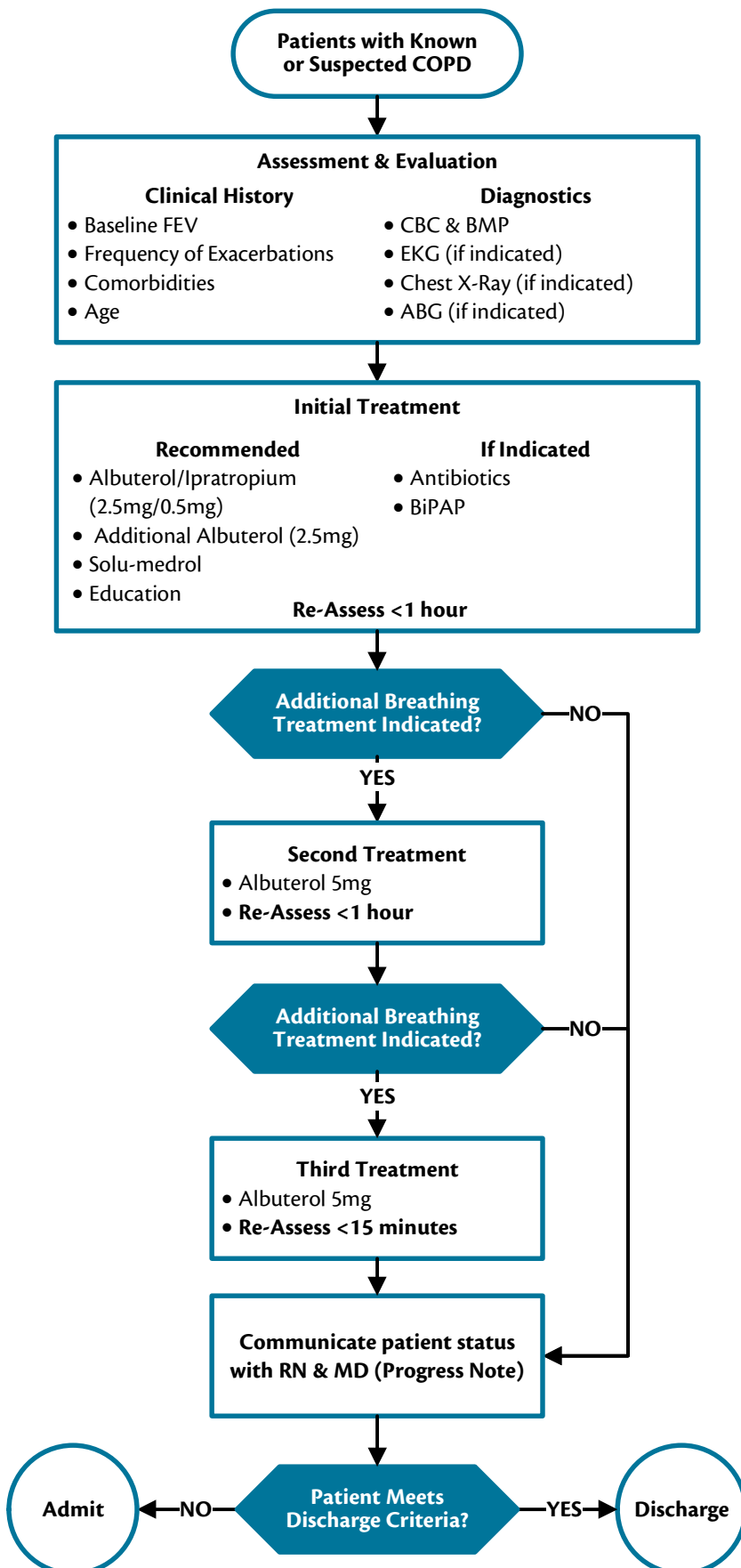


UW Medicine | VALLEY MEDICAL CENTER

Acute Exacerbation of COPD: Emergency Management



PATHWAY INCLUSION CRITERIA

- Acute Exacerbation of COPD
- Age ≥ 18 years old

ICU ADMISSION CRITERIA

- Need for invasive or noninvasive ventilation
- Requires high flow nasal cannula (HFNC)
- Hemodynamic instability

HOSPITAL ADMISSION CRITERIA

- Significant symptoms not relieved by initial treatment
- Marked increase in intensity of symptoms over baseline with increased oxygen requirement or respiratory distress
- Poor cardiopulmonary reserves due to advanced disease or comorbidities
- High risk comorbidities
- >3 exacerbations per year
- Uncertain diagnosis
- Inadequate home support or follow-up

DISCHARGE CRITERIA

- Improved & Stabilized
- Safe Destination & Outpatient Support
- Medication Compliance