

Gratitude Report

JULY 1, 2024 –

JUNE 30, 2025

SPARKS OF POSSIBILITY

Thank You from Valley's CEO & Board Leadership

This past year has tested the strength and spirit of our entire Valley community. Like many public hospitals across the nation, we faced significant financial challenges brought on by shifts in state and federal policies, rising costs, and the growing demand for care. Yet through it all, our mission remained our constant guide: *caring for our community like family*.

Every day, our caregivers, staff, and volunteers have shown up with compassion, skill, and resilience—delivering excellent care, comforting patients, and supporting one another through uncertain times. To our community, we extend our deepest gratitude for standing by us and believing in the vital role your public hospital plays in the health and future of our region.

In November, voters approved an increase in our tax levy—a decision that represents far more than financial support. It is a powerful expression of

partnership and trust in what we can achieve together. This levy creates sparks of hope and possibility that will begin to take shape in 2026 and beyond. These new resources will strengthen essential hospital services, sustain our dedicated workforce, and allow us to invest in critical infrastructure and technology that improve care for everyone we serve.

A stronger Valley means a stronger South King County community. Together, we will lift each other up and build a healthier future.

With gratitude and hope,



Jeannine Erickson Grinnell

Chief Executive Officer
Superintendent of
King County PHD No. 1



Larry Rude

Chair
Board of Trustees



Carol Barber

President
Board of Commissioners



Cancer Center Phase 1B Opening September 2026

We are excited to announce that construction on Phase 1B of the Cancer Center at Valley Medical Center began this past September and is scheduled to open in September 2026. This next phase represents another **important milestone in our vision of offering comprehensive cancer care under one roof.**

PHASE 1B WILL INCLUDE AN ONCOLOGY & HEMATOLOGY CLINIC, A MULTIDISCIPLINARY CLINIC, AND AN ACUTE SYMPTOM MANAGEMENT CLINIC.

Together, these new spaces will make care more convenient, reduce delays from diagnosis to treatment, and provide timely, compassionate support when patients and families need it most.



Thanks to the generosity and support of Valley Girls & Guys, Norcliffe Foundation, local nonprofits and businesses, and thousands of individual donors, a future filled with hope, healing, and comfort is growing stronger for those facing cancer in our South King County community.

valleymed.org/cancercenter

LET'S FINISH THE FINAL PHASES— TOGETHER!

The plans are in place for the final two phases of our Cancer Center:

Phase 1C: Café on the third floor

Phase 2: Radiation Therapy and Oncology Imaging on the first floor

These two final spaces will cost approximately \$35M to complete, and we need your help to make them a reality! **Learn more at valleymed.org/cancercenter.**



Celebrating 5 Years of THANKS!

This year, we mark five years since the launch of Valley's **Thank a Caregiver** program—recognizing our incredible staff, teams, and friends of Valley who give so much to care for our community like family. Through their kindness, our donors have shared thanks with over 2,800 people (some more than once!). The Thank a Caregiver hearts, floats, and pocket hugs are lasting and personal symbols of appreciation and a reminder of what a remarkable impact our caregivers make.

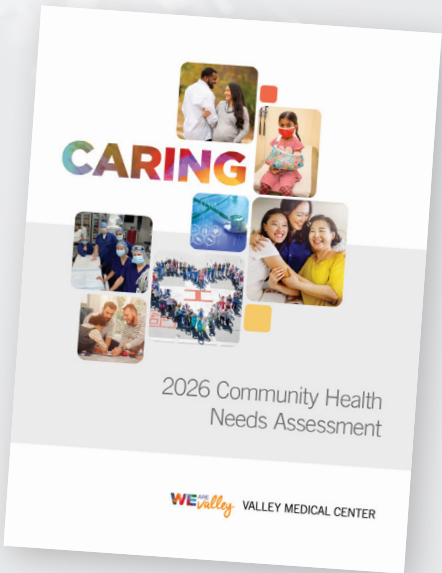
From the start, our community partner, Renton Art & Glass Studio, has captured the heart and spirit behind each hand-blown glass piece; their craftsmanship is exceptional. **Here's to five years of gratitude, and to many more to come!**

valleymed.org/sharethanks

Listening to You, Planning for Better Health

Valley will conduct its 2026 Community Health Needs Assessment (CHNA) beginning in January to **understand and respond to the most pressing health needs in our hospital district.** The CHNA guides our community benefit programs and activities, and shapes our three-year Implementation Strategy, providing a thoughtful roadmap for action.

By focusing on the areas where help is needed most, Valley works to improve health and well-being, ensuring the residents who call South King County home have the support and resources they deserve.



OUR COMMUNITY IMPACT

Primary, specialty, and urgent care clinic visits	744,658
Emergency department visits	90,964
Babies delivered	2,762
Infusion Center visits	26,362
Financial assistance provided to our community	\$63M
Extraordinary employees	4,036
Volunteers in action hours	13,027
# of new cancer diagnoses	1,214
# of different patient languages in the hospital district	180

Our Community is Our Greatest Need

Valley serves more than 600,000 residents, patients, and families across South King County. Gifts to the Greatest Need Fund support vital projects not covered by other directed funds, giving Valley the flexibility to address our community's most immediate needs. In uncertain times, your thoughtfulness has shown what it means to stand by our neighbors like family. Give today and help ensure care, comfort, and hope remain within reach for all.

valleymed.org/support-valley



Your Gift Gives Back

"I truly appreciate all of the staff at Valley Medical Center. I've been coming here for the past couple of years for cancer treatment and was hospitalized last year for an extended period of time. I am truly grateful for the wonderful care I receive."

– Grateful Valley Patient and Monthly Donor



valleymed.org/supporters

valleymed.org/plannedgiving

valleymed.org/gift

Financial Information July 1, 2024 – June 30, 2025

SUMMARY

\$989,703,000

Total Operating Revenue
Includes all Philanthropy. 2.7% of Total Operating Revenue is an allocation from local property taxes.

\$22,767,000

Total Nonoperating Income

\$1,039,001,000

Total Operating Expenses

\$685,740,660 | 66%

Direct Care Expenses

\$353,260,340 | 34%

Indirect Expenses



DONATION DETAILS

How You Gave

\$3,356,491 | 92% in support of the Cancer Center

\$120,000 | 3% in support of Rehab Medicine

\$48,897 | 1% in support of Employee Recognition

\$46,026 | 1% in support of Valley's Greatest Needs

\$80,180 | 3% in other donations

DOLLARS IN ACTION Valley's Investment in the Community

Each year, Valley directly supports community members by providing items, services, and financial support. Low-income, Medicare, and Medicaid patients make up a significant share of the population for whom we provide care, and Valley also absorbed **\$175M** in under compensated costs. Please visit the link below for a detailed breakdown.

valleymed.org/dollarsinaction

STRONGER TOGETHER

At Valley, caring for our community like family is at the heart of everything we do. Every effort we make—from improving access to healthcare to enhancing vital programs and services—strengthens our ability to provide exceptional care to those who count on us. With your support, we can serve with purpose and meet our community's needs with compassion, because a stronger Valley means a stronger South King County.

Visit valleymed.org/vmccares to learn more about areas in need of support and methods of giving or contact Margaret Russ, Director of Philanthropy & Volunteer Services, at 425.690.6775 or via email at margaret_russ@valleymed.org.

 valleymed.org/vmccares



Your gift in support of Valley is tax deductible. Valley Medical Center, also known as Public Hospital District No. 1 of King County, is a 501(c)(3) organization. All gifts are tax-deductible to the full extent of the law. Our federal tax identification number is 91-6000986. © 2025 VMC (Rev 11/25) VMC-00069



VALLEY MEDICAL CENTER

Public Hospital District No. 1 of King County

Board of Commissioners of
Public Hospital District No. 1 of King County
400 S 43rd St
Renton, WA 98055-5714